

0CNP2-M99200EN

# Contents

Fig. No.    Fig. Name

## ENGINE RELATION SECT

1. ENGINE RELATED & CLUTCH

## DRIVE SECTION

2. INPUT

3. GEAR CASE

## WHEEL SECTION

4. WHEEL

5. AXLE

## REAPING SECTION

6. BLADE, FAN & CATCHER

## HANDLE SECTION

7. HANDLE

8. LEVER WIRE

## FRAME SECTION

9. CASING & COVER

10. SCRAPER & GUARD

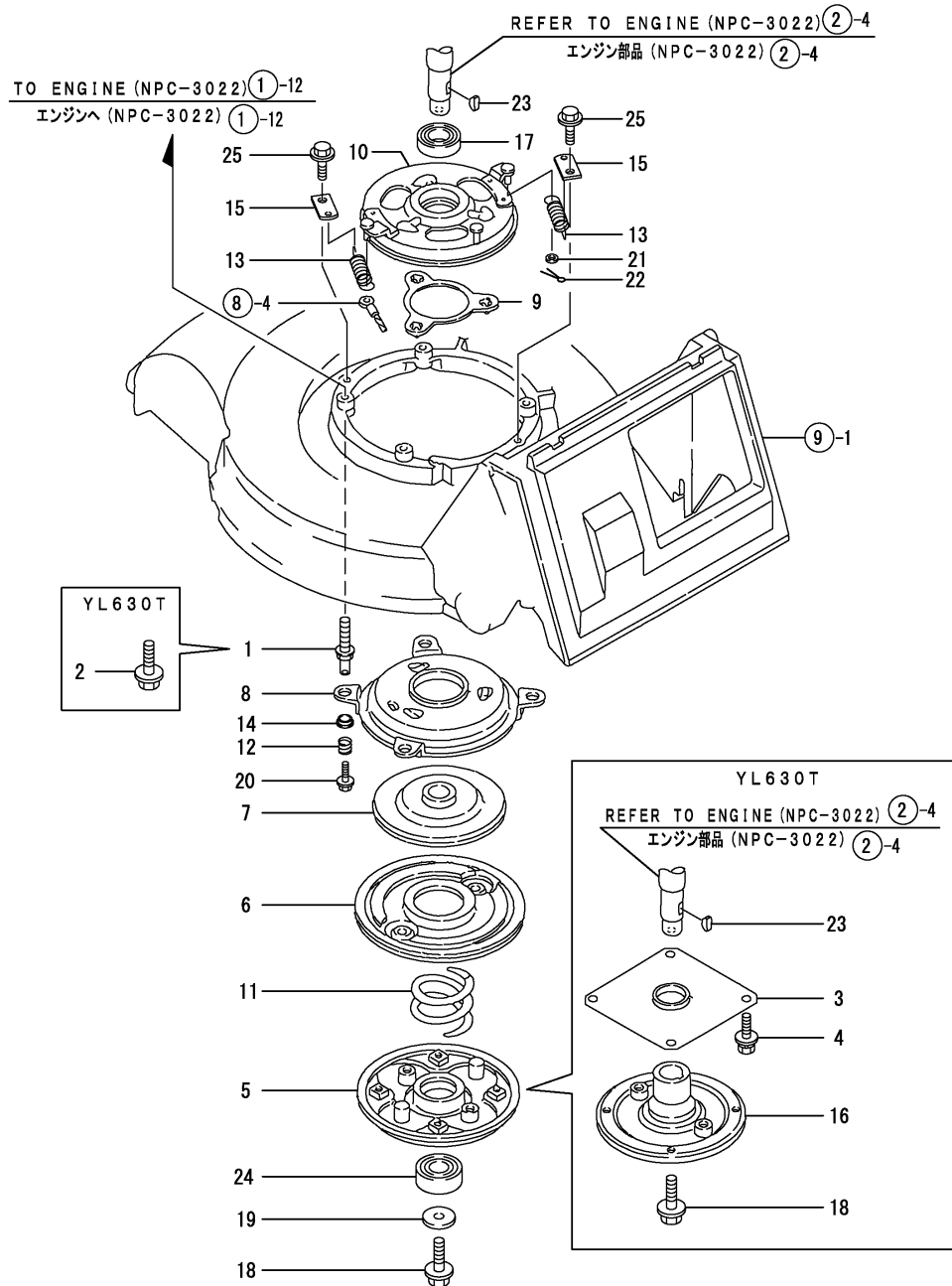
## LABELS, TOOL & ACCESS

11. LABELS

12. TOOLS

Fig. No.    Fig. Name

Fig.1. ENGINE RELATED & CLUTCH



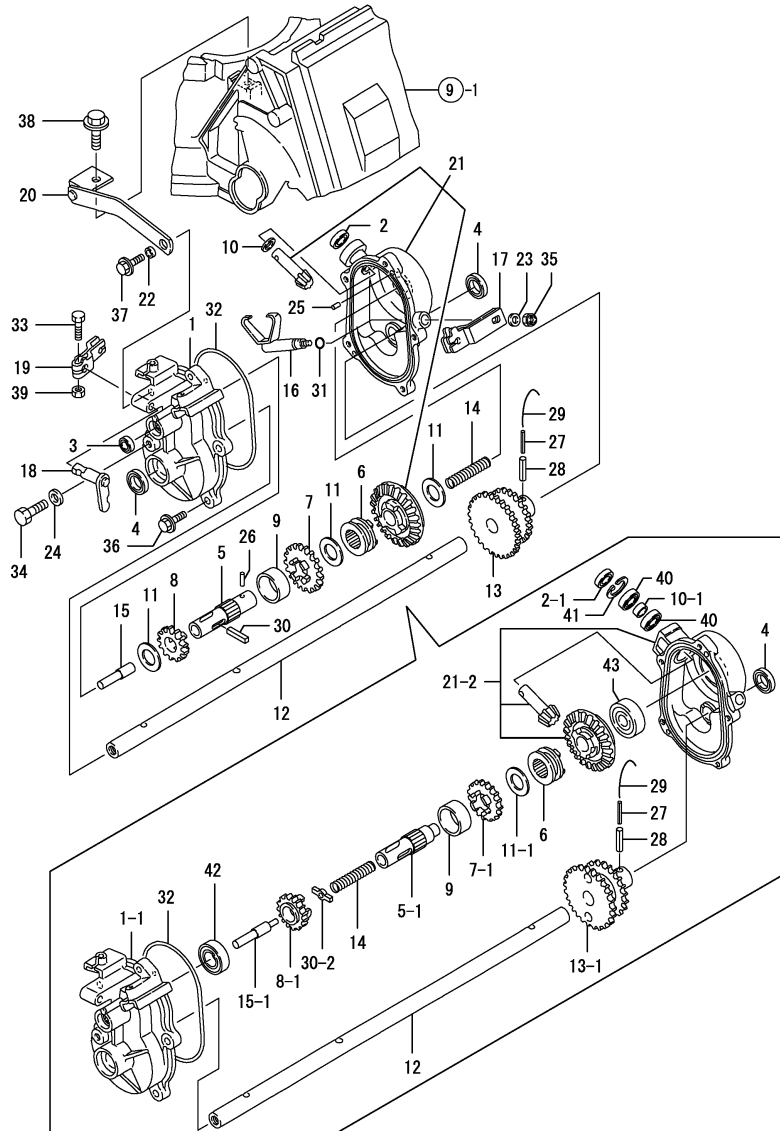
(A)=YL630T  
(B)=YL630TS  
(C)=YL630T-R

(D)=YL630TSC  
(E)=  
(F)=

No.	Lev.	Parts No.	Description	Q'ty						I	R
				(A)	(B)	(C)	(D)	(E)	(F)		
1	1	1E1061-11100	BOLT, ENGINE		4		4				
2	1	26107-100352	BOLT, M10X 35 PLATED	4		4					
2-1	1	26106-100352	BOLT, M10X 35 PLATED	4		4					R
3	1	1E1071-12750	COVER, ENGINE LOWER	1		1					
4	1	26018-080164	BOLT M 8X 16	4		4					
4-1	1	26014-080162	BOLT, M8X 16	4		4					R
5	1	1E1060-12011	PLATE, MAIN		1		1				
6	1	1E1060-12100	DISK		1		1				
7	1	1E1061-12150	DRUM, DRIVE		1		1				
8	1	1E1061-12170	PLATE, DISK		1		1				
9	1	1E1061-12220	HOLDER, BALL		1		1				
10	1	1E1061-12251	BRACKET, DISK BOWL		1		1				
11	1	1E1071-12300	SPRING, CLUTCH PR		1		1				
12	1	1E1061-12310	SPRING, GUIDE		4		4				
13	1	1E1071-12320	SPRING, CLUTCH RETURN		2						
13-1	1	1E1071-12321	SPRING		2		2				N
14	1	1E1060-12340	METAL, 106		4		4				
15	1	1E1061-12360	HOOK, SPRING		2		2				
16	1	1E1061-12650	FLANGE, BLADE	1		1					
17	1	1E1060-12970	BEARING, 60/22UU		1		1				
18	1	1E1060-12990	BOLT, M10X28	1	1	1	1				
19	1	1A1040-46460	WASHER, 10X33X4.5		1		1				
20	1	1E4480-99150	BOLT 6X12		4		4				
21	1	22137-060000	WASHER, 6		1						
21-1	1	1E4030-99230	WASHER 6X16X1		1		1				N
22	1	22417-200120	COTTER PIN 2.0X12		1		1				
23	1	22522-040160	KEY, WOODRUFF 4X16	1	1	1	1				
24	1	24104-062044	BEARING, BALL 6204UU		1		1				
25	1	26476-080162	SCREW, TAPPING M8X16		2		2				



Fig.3. GEAR CASE



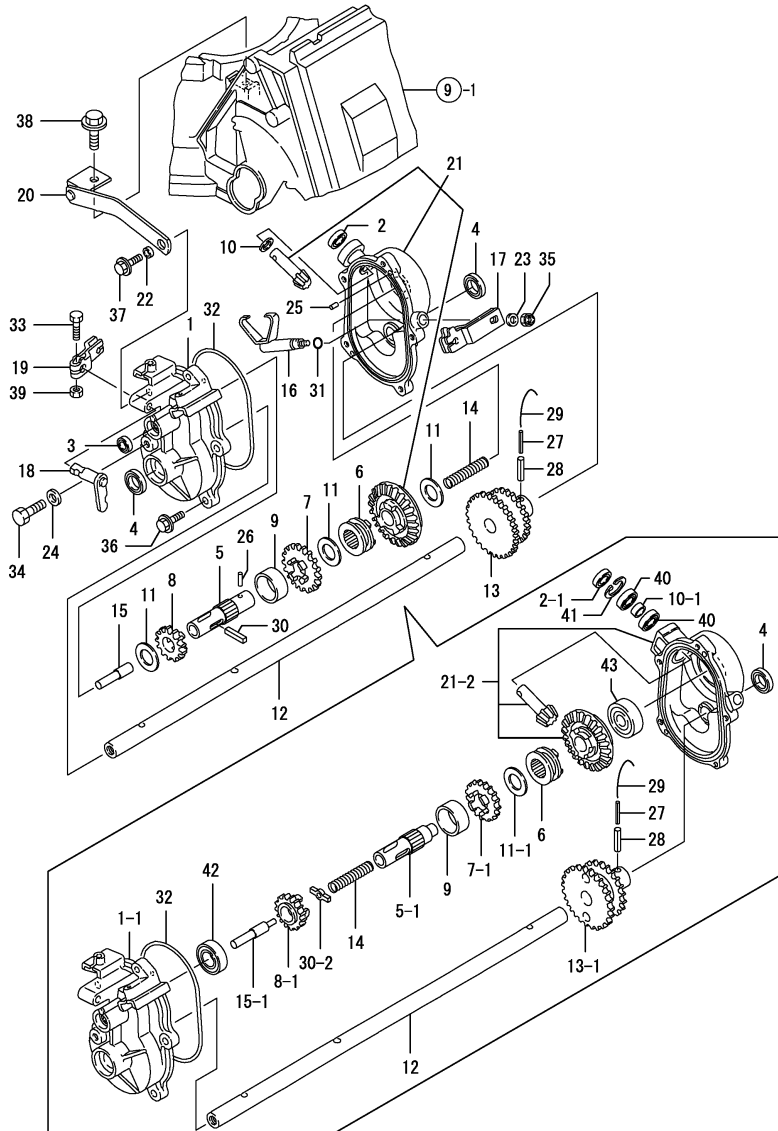
Remarks

- (1) REF. NO.30 PART IS PLATED  
REF. NO.30-1 PART IS NOT PLATED
- (2) REF. NO.1-1 PART HAS REF.NO.42  
BEARING MOUNTING HOLE
- (3) TOOTH NUMBER=REF.NO.7,31  
TOOTH;REF.NO.7-1,27 TOOTH

(A)=YL630T  
(B)=YL630TS  
(C)=YL630T-R  
(D)=YL630TSC  
(E)=  
(F)=

No.	Lev.	Parts No.	Description	Q'ty						I	R
				(A)	(B)	(C)	(D)	(E)	(F)		
1	1	1E1061-25011	CASE, GEAR	1	1	1					
1-1	1	1E1061-25012	CASE, GEAR L	1	1	1	1				S 2
		(A=F100291) (B=F100968) (C=F100191)									
2	1	1E1061-25050	SEAL TC10205,OIL	1	1	1					
2-1	1	1E1061-25051	SEAL, OIL TC10225	1	1	1	1				S
		(A=F100291) (B=F100968) (C=F100191)									
3	1	1E1061-25060	SEAL, OIL TC8165	1	1	1	1				
4	1	1E1061-25070	SEAL, OIL TC15255	2	2	2	2				
5	1	1E1061-25110	SHAFT,CLUTCH	1	1	1					
5-1	1	1E1061-25111	SHAFT, CLUTCH	1	1	1	1				S
		(A=F100291) (B=F100968) (C=F100191)									
6	1	1E1060-25140	CLUTCH, AXLE	1	1	1	1				
7	1	1E1061-25140	GEAR 31	1	1	1					
7-1	1	1E1061-25141	GEAR 27	1	1	1					S 3
		(A=F100291) (B=F100968) (C=F100191)									
7-2	1	1E1061-25142	GEAR, 27	1	1	1					N
		(A=FXXXXXXX) (B=F101323) (C=F102942)									
7-3	1	1E1061-25610	GEAR, 29	1	1	1	1				S
		(A=FXXXXXXX) (B=F103784) (C=F102957)									
8	1	1E1061-25150	GEAR 21	1	1	1					
8-1	1	1E1061-25151	GEAR, 21	1	1	1					S
		(A=F100291) (B=F100968) (C=F100191)									
8-2	1	1E1061-25620	GEAR, 22	1	1	1	1				S
		(A=FXXXXXXX) (B=F103784) (C=F102957)									
9	1	1E1061-25160	COLLAR, 26X32X14	1	1	1	1				
10	1	1E1061-25170	LINER, 10X16X1	1	1	1					
10-1	1	1E1061-25171	SPACER, 10X13.8X6	1	1	1	1				S
		(A=F100291) (B=F100968) (C=F100191)									
11	1	1E1061-25180	LINER, 17X30X1	3	3	3					
11-1	1	1E1061-25180	LINER, 17X30X1	1	1	1	1				K
		(A=F100291) (B=F100968) (C=F100191)									
12	1	1E1071-25200	SHAFT, DRIVE 53	1	1	1	1				
13	1	1E1061-25210	GEAR 45-36 COMPL.	1	1	1					
13-1	1	1E1061-25211	GEAR 45-39	1	1	1					S
		(A=F100291) (B=F100968) (C=F100191)									
13-2	1	1E1061-25212	GEAR, 45-39	1	1	1					N
		(A=FXXXXXXX) (B=F101323) (C=F102942)									
13-3	1	1E1061-25630	GEAR, 44-37	1	1	1	1				S
		(A=FXXXXXXX) (B=F103784) (C=F102957)									
14	1	1E1061-25250	SPRING, 10.7X53	1	1	1	1				
15	1	1E1061-25270	PIN,CHANGE	1	1	1					
15-1	1	1E1061-25271	PIN, CHANGE	1	1	1	1				S
		(A=F100291) (B=F100968) (C=F100191)									
16	1	1E1061-25300	FORK, CLUTCH	1	1	1	1				
17	1	1E1061-25330	LEVER, TIP 45H	1	1	1	1				
18	1	1E1061-25370	LINK, CHANGE	1	1	1	1				
19	1	1E1061-25410	LEVER, TIP 30	1	1	1	1				
20	1	1E1061-25430	LINK,CASE SUPPORT	1	1	1					
20-1	1	1E1061-25431	LINK, CASE SUPPORT	1	1	1	1				R
		(A=FXXXXXXX) (B=F103706) (C=F102952)									
21	1	1E1061-25500	BEVEL CASE CMP.	1	1	1					

Fig.3. GEAR CASE



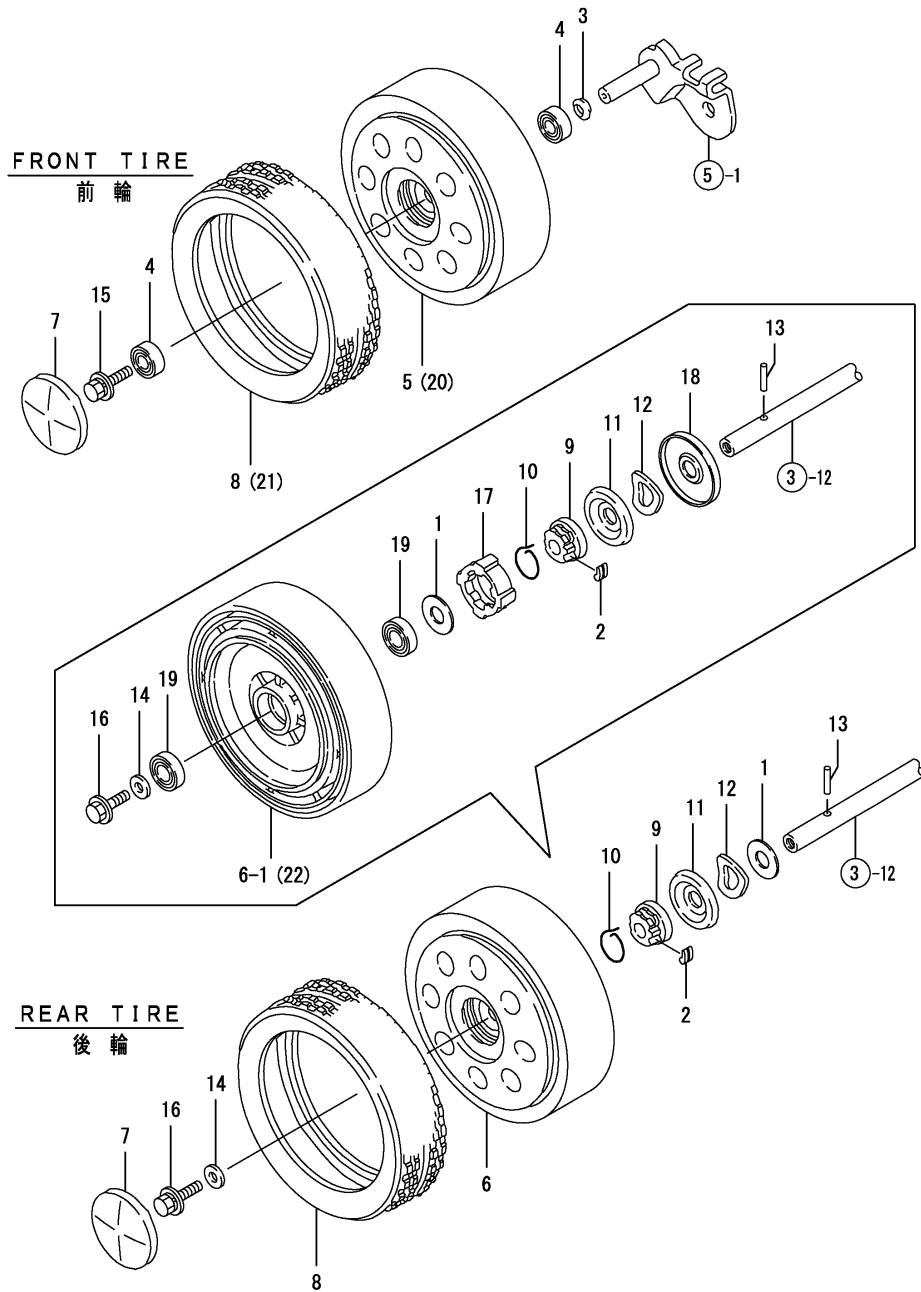
(A)=YL630T  
(B)=YL630TS  
(C)=YL630T-R  
(D)=YL630TSC  
(E)=  
(F)=

No.	Lev.	Parts No.	Description	Q'ty						I	R
				(A)	(B)	(C)	(D)	(E)	(F)		
21-1	1	1E1061-25501 (A=FXXXXXX) (B=F100328) (C=F100021)	BEVEL CASE CMP.	1	1	1					N
21-2	1	1E1061-25502 (A=F100291) (B=F100968) (C=F100191)	CASE ASSY	1	1	1	1				S
22	1	1E6910-39640	COLLAR, 6.5X10.5X5.5	1	1	1	1				
23	1	22137-060000	WASHER, 6	1	1	1	1				
24	1	22190-080000	WASHER, SEAL 8	1	1	1	1				
25	1	22312-040080	PIN, PARALLEL M4X 8	2	2	2	2				
26	1	22312-040140 (A=F100291) (B=F100968) (C=F100191)	PIN, PARALLEL M4X14	1	1	1					Z
27	1	22351-035025	PIN, SPRING 3.5X25	1	1	1	1				
28	1	22351-060025	PIN, SPRING 6.0X25	1	1	1	1				
29	1	22451-100160	WIRE 1.0X160,BINDING	1	1	1	1				
30	1	22551-050250	KEY, 5X 25	1	1						
30-1	1	1E1061-25490 (A=F100291) (B=F100251) (C=F100191)	KEY 5X5X25	1	1	1					S 1
30-2	1	1E1061-25491 (A=F100291) (B=F100968) (C=F100191)	TINE, CLUTCH	1	1	1	1				S
31	1	24311-000070	O-RING, 1AP7.0	1	1	1	1				
32	1	24321-001100	O-RING, 1AG110.0	1	1	1	1				
33	1	26117-060202	BOLT M 6X 20	1	1	1					
33-1	1	26116-060202 (A=FXXXXXX) (B=F103706) (C=F102952)	BOLT, M6X 20 PLATED	1	1	1	1				R
34	1	26117-080122	BOLT M 8X 12 PLATED	1	1	1					
34-1	1	26116-080122 (A=FXXXXXX) (B=F103706) (C=F102952)	BOLT, M8X 12 PLATED	1	1	1	1				R
35	1	26347-060002	NUT, M6	1	1	1	1				
36	1	26476-060202	SCREW, TAPPING M6X20	4	4	4	4				
37	1	26476-060302	SCREW, TAPPING M6X30	1	1	1	1				
38	1	26476-080162	SCREW, TAPPING M8X16	1	1	1	1				
39	1	26717-060002	NUT, M6	1	1	1	1				
40	1	1E1061-25481 (A=F100291) (B=F100968) (C=F100191)	BEARING, 6900	2	2	2	2				W
41	1	22252-000220 (A=F100291) (B=F100968) (C=F100191)	RING, 22	1	1	1	1				W
42	1	24101-060034 (A=F100291) (B=F100968) (C=F100191)	BEARING, BALL 6003	1	1	1	1				W
43	1	24101-063014 (A=F100291) (B=F100968) (C=F100191)	BEARING, BALL 6301	1	1	1	1				W

Remarks

- (1) REF. NO.30 PART IS PLATED  
REF. NO.30-1 PART IS NOT PLATED
- (2) REF. NO.1-1 PART HAS REF.NO.42  
BEARING MOUNTING HOLE
- (3) TOOTH NUMBER=REF.NO.7,31  
TOOTH;REF.NO.7-1,27 TOOTH

Fig.4. WHEEL



(A)=YL630T  
(B)=YL630TS  
(C)=YL630T-R

(D)=YL630TSC  
(E)=  
(F)=

No.	Lev.	Parts No.	Description	Qty						I	R
				(A)	(B)	(C)	(D)	(E)	(F)		
1	1	1E4110-24010	LINER, 15	2	2	2	2				
2	1	1E1060-25420	TINE, CLUTCH	4	4	4	4				
3	1	1E1060-31100	SPRING, LOCK 12.7X23	2	2	2	2				
4	1	1E1060-31450	BEARING, 12X28.8X11	4	4	4	4				
5	1	1E1071-31500	WHEEL, FRONT	2	2						
5-1	1	1E1071-31570	WHEEL, PRF	2	2	2					N
		(A=F100181) (B=F100251)									
6	1	1E1071-31510	WHEEL, PR R	2	2						
6-1	1	1E1071-31580	WHEEL, PRF	2	2	2					N
		(A=F100181) (B=F100251)									
7	1	1E1061-31530	CAP, WHEEL	4	4		2				Z
		(A=F100181) (B=F100251)									
8	1	1E1061-31550	TIRE	4	4						
8-1	1	1E1071-31600	TIRE, PRO	4	4	4	2				N
		(A=F100181) (B=F100251)									
9	1	1E1061-31650	CLUTCH	2	2	2	2				
10	1	1E1061-31671	SPRING, RING 26	2	2	2	2				
11	1	1E1061-31681	COVER, CLUTCH	2	2	2	2				
12	1	1E1061-31690	PLATE, COVER	2	2	2	2				
13	1	1E1061-31750	PIN, 5X25	2	2	2	2				
14	1	22157-080000	WASHER, 8	2	2	2	2				
15	1	26018-080164	BOLT M 8X 16	2	2	2					
15-1	1	26014-080162	BOLT, M8X 16	2	2	2	2				R
		(A=FXXXXXXX) (B=F103706) (C=F102952)									
16	1	26107-080122	BOLT M 8X 12 PLATED	2	2	2					
16-1	1	26107-080162	BOLT M 8X 16 PLATED	2	2	2					N
		(A=FXXXXXXX) (B=F100328) (C=F100021)									
16-2	1	26106-080162	BOLT, M8X 16 PLATED	2	2	2	2				R
		(A=FXXXXXXX) (B=F103706) (C=F102952)									
17	1	1E1061-31660	HOUSING, CLUTCH	2	2	2					W
		(A=F100181) (B=F100251)									
17-1	1	1E1061-31661	HOUSING, CLUTCH	2	2	2	2				N
		(A=FXXXXXXX) (B=F103706) (C=F102952)									
18	1	1E1071-31700	COVER, CLUTCH	2	2	2	2				W
		(A=F100181) (B=F100251)									
19	1	24104-060024	BEARING, BALL 6002UU	4	4	4	4				W
		(A=F100181) (B=F100251)									
20	1	1E1061-31500	WHEEL, F				2				
21	1	1E1061-31550	TIRE				2				
22	1	1E1071-31580-1	WHEEL, REAR				2				

Fig.5. AXLE

(A)=YL630T  
 (B)=YL630TS  
 (C)=YL630T-R

(D)=YL630TSC  
 (E)=  
 (F)=

No.	Lev.	Parts No.	Description	Qty						I	R
				(A)	(B)	(C)	(D)	(E)	(F)		
1	1	1E1061-35010	AXLE, FRONT L	1	1	1	1				
2	1	1E1061-35050	AXLE, FRONT R	1	1	1	1				
3	1	1E1061-35200	LEVER, WHEEL	2	2	2	2				
4	1	1E1061-35210	LEVER, WHEEL	2	2	2	2				
5	1	1E1061-35250	KNOB, ADJUST	4	4	4	4				
6	1	1E1061-35350	BOLT, STEPPED M8X25	4	4	4	4				
7	1	1E1061-35510	AXLE, REAR L	1	1	1	1				
8	1	1E1061-35550	AXLE, REAR R	1	1	1	1				
9	1	22137-080000	WASHER, 8	4	4	4	4				
10	1	26367-080002	NUT, M8	3	3	3	3				
11	1	26717-080002	NUT, M8	1	1	1	1				

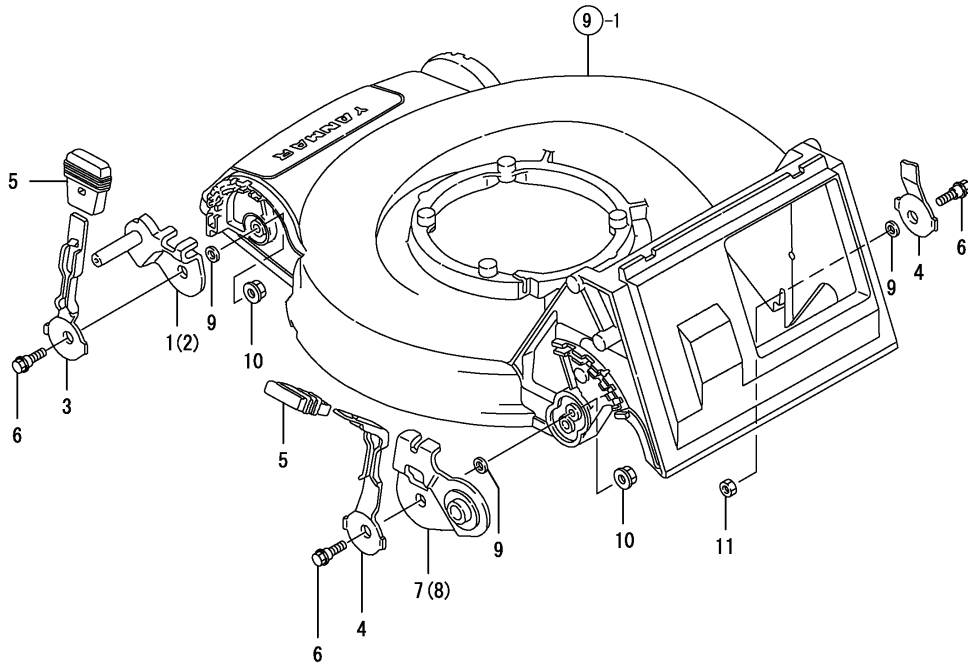




Fig.6. BLADE, FAN & CATCHER

(A)=YL630T  
(B)=YL630TS  
(C)=YL630T-R

(D)=YL630TSC  
(E)=  
(F)=

No.	Lev.	Parts No.	Description	Qty						I	R
				(A)	(B)	(C)	(D)	(E)	(F)		
1	1	1E1071-41100	BLADE 53	1	1	1	1				
2	1	1E1060-41120	GUIDE, BLADE	1	1	1	1				
3	1	26138-100202	BOLT 10X20,COLLAR HD	2	2	2					
3-1	1	1E1061-41130 (A=FXXXXXX) (B=F103706) (C=F102952)	BOLT, M10X20	2	2	2	2				R
4	1	1E1060-42050	FAN, BLADE	1	1	1	1				
5	1	26016-060122	BOLT, M6X 12	4	4	4					
5-1	1	26013-060122 (A=FXXXXXX) (B=F103706) (C=F102952)	BOLT, M6X 12	4	4	4	4				R
6	1	1E1071-43011	FRAME, CATCHER 53	1	1	1	1				
7	1	1E1071-43100	CATCHER, 53	1	1	1	1				
8	1	1E1061-43200	PIPE, 8 10 35	2	2	2	2				

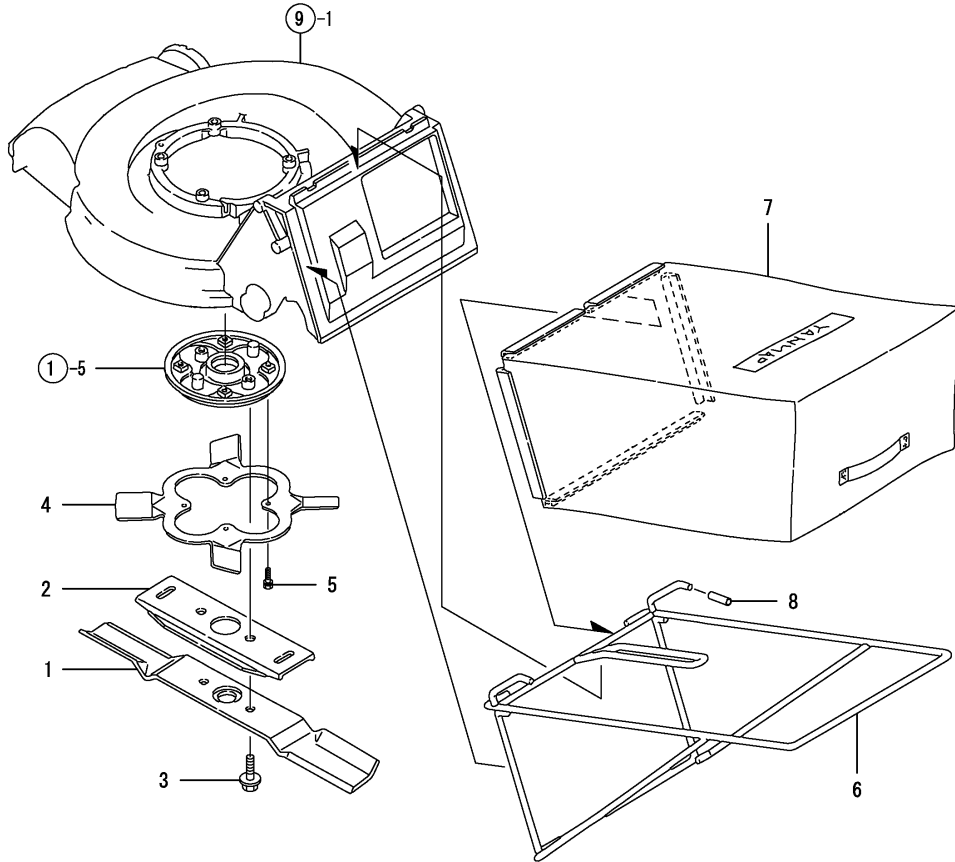
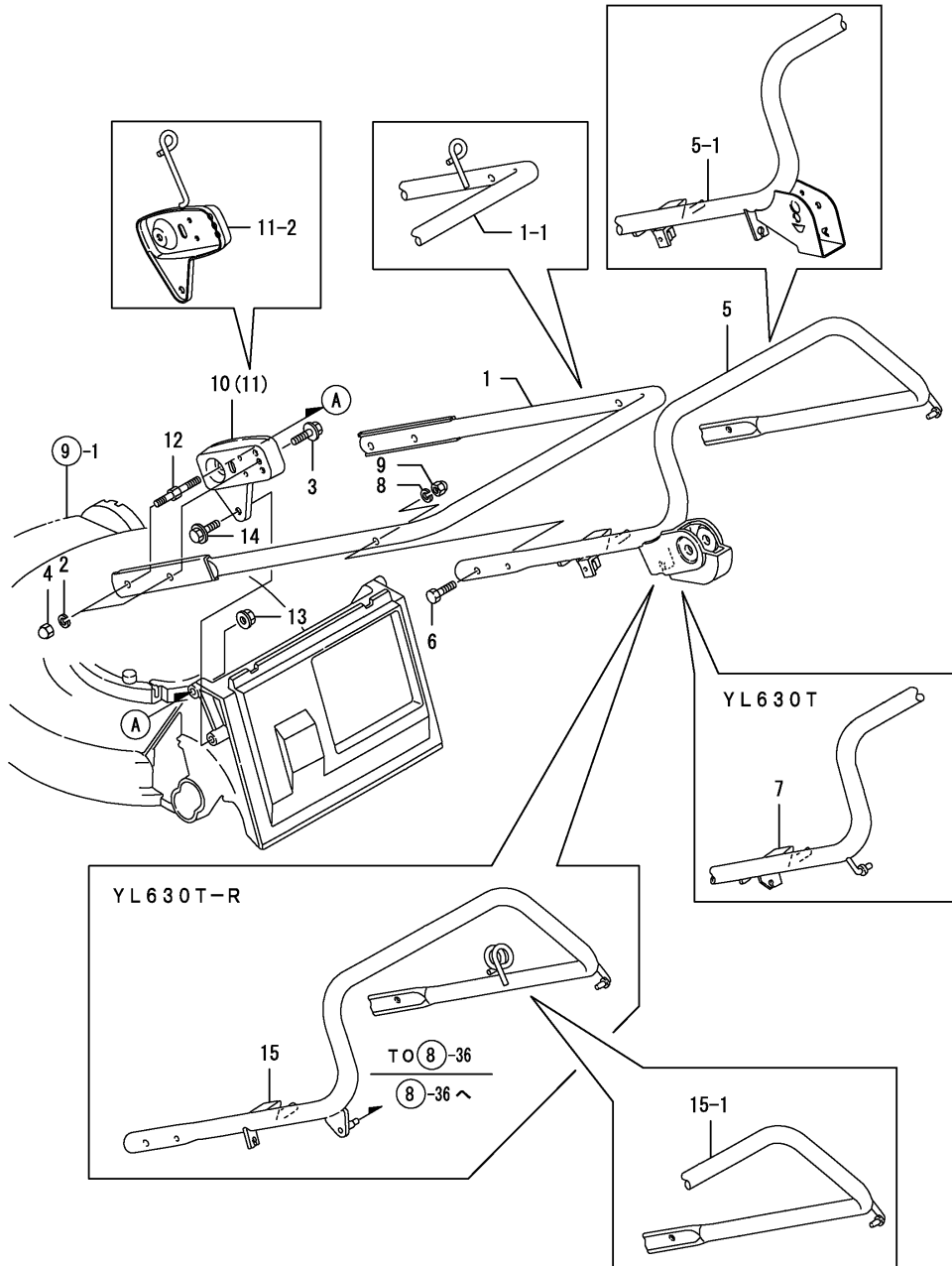


Fig.7. HANDLE

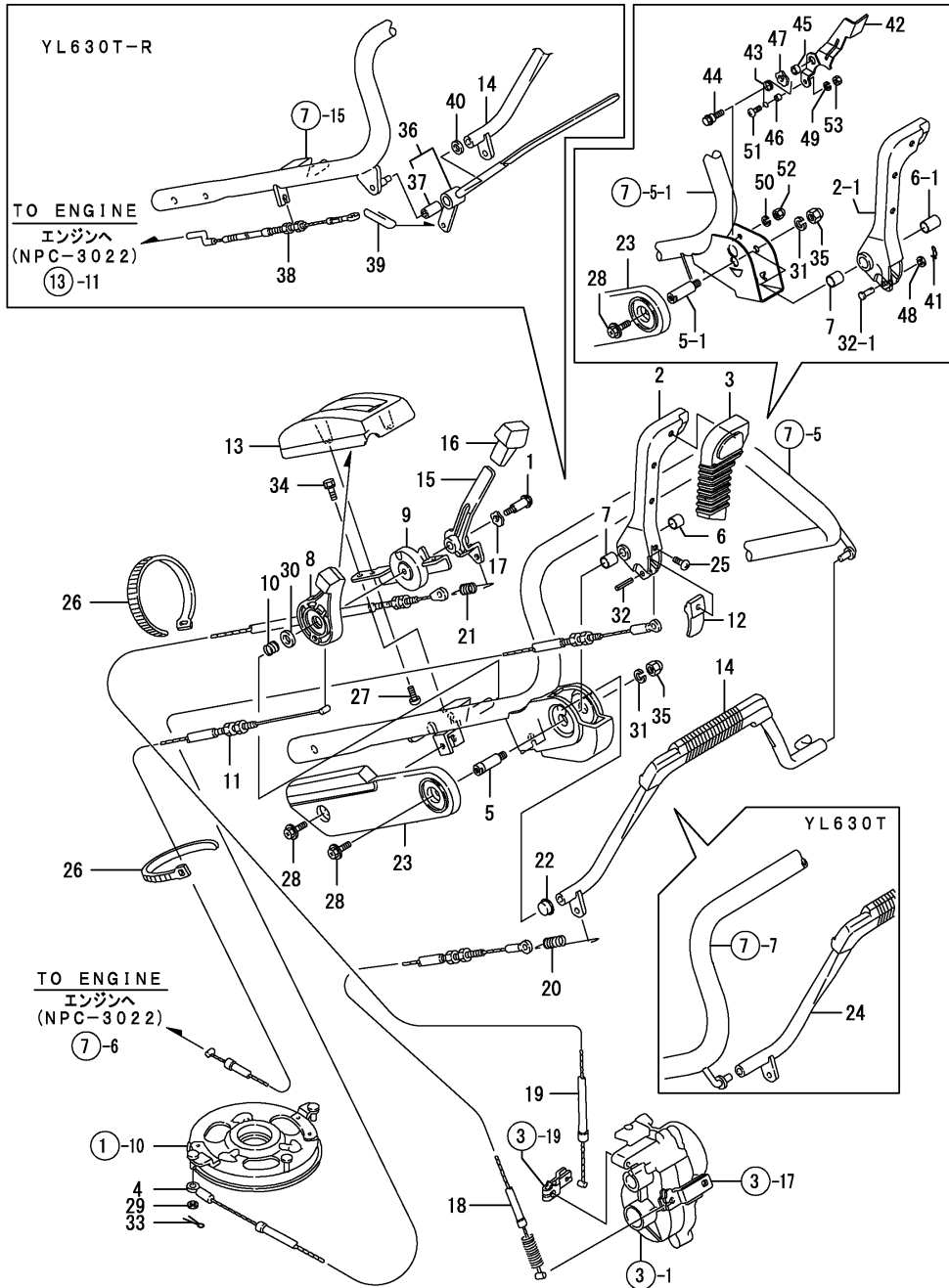


(A)=YL630T  
(B)=YL630TS  
(C)=YL630T-R

(D)=YL630TSC  
(E)=  
(F)=

No.	Lev.	Parts No.	Description	Q'ty						I	R
				(A)	(B)	(C)	(D)	(E)	(F)		
1	1	1E1071-50010	HANDLE COMP.,MAIN	1	1	1					
1-1	1	1E1071-50011	HANDLE, MAIN PR	1	1	1	1				S
(A=SEE ILLST) (B=F103784) (C=F102957)											
2	1	22217-080000	WASHER, SPRING 8	4	4	4	4				
3	1	26107-080302	BOLT M 8X 30 PLATED	2	2	2					
3-1	1	26106-080302	BOLT, M8X 30 PLATED	2	2	2	2				R
(A=FXXXXXX) (B=F103706) (C=F102952)											
4	1	26668-080002	NUT, CAP M8	4	4	4	4				
5	1	1E1061-51011	HANDLE TS COMPL.		1						
5-1	1	1E1061-51012	HANDLE ASSY, TS		1		1				S
(B=F103784)											
6	1	1E1061-51110	BOLT, M8X40		2	2	2	2			
7	1	1E1061-51700	HANDLE ASSY, TD		1						
8	1	22217-080000	WASHER, SPRING 8	2	2	2	2				
9	1	26668-080002	NUT, CAP M8	2	2	2	2				
10	1	1E1061-56010	STAY, HANDLE L	1	1	1					
10-1	1	1E1061-56020	STAY, HANDLE LZ	1	1	1	1				Q
(A=F100291) (B=F100968) (C=F100191)											
11	1	1E1061-56050	STAY, HANDLE R	1	1	1					
11-1	1	1E1061-56060	STAY, HANDLE RZ	1	1	1					Q
(A=F100291) (B=F100968) (C=F100191)											
11-2	1	1E1061-56051	STAY, HANDLE R	1	1	1	1				S
(A=SEE ILLST) (B=F103784) (C=F102957)											
12	1	1E1071-56200	BOLT, STAY M8X36 PR	2	2	2	2				
13	1	26367-080002	NUT, M8	2	2	2	2				
14	1	26476-080162	SCREW, TAPPING M8X16	2	2	2	2				
15	1	1E1061-51710	HANDLE COMP.,TR			1					
15-1	1	1E1061-51711	HANDLE ASSY, TR			1					S
(C=F102957)											

Fig.8. LEVER WIRE



(A)=YL630T  
(B)=YL630TS  
(C)=YL630T-R

(D)=YL630TSC  
(E)=  
(F)=

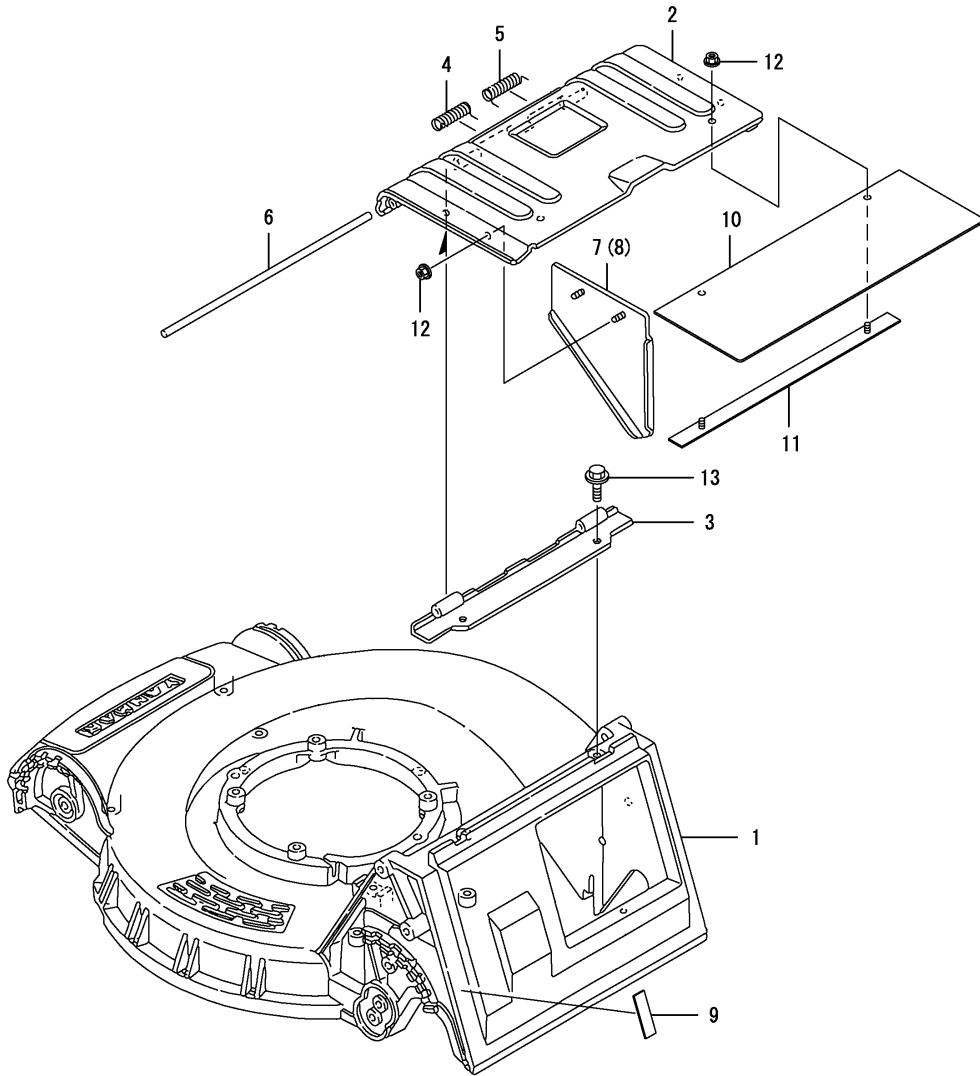
No.	Lev.	Parts No.	Description	Qty						I	R
				(A)	(B)	(C)	(D)	(E)	(F)		
1	1	1E1060-12350	BOLT, STEPPED M6X12	1	1	1	1				
2	1	1E1061-57011	LEVER, BLADE CLUTCH		1						
2-1	1	1E1061-57012	LEVER, BLADE CLUTCH		1		1				S
				(B=F103784)							
3	1	1E1061-57040	GRIP, CLUTCH		1		1				
4	1	1E1061-57050	WIRE, BLADE CLUTCH		1						
4-1	1	1E1061-57051	WIRE, BLADE CLUTCH		1		1				N
				(B=F100968)							
5	1	1E1061-57061	PIN, LEVER FULCRUM		1						
5-1	1	1E1061-57062	PIN, FULCRUM		1		1				S
				(B=F103784)							
6	1	1E1061-57080	METAL, 12X12		1						
6-1	1	1S6530-61730	80B, 1220		1		1				S
				(B=F103784)							
7	1	1E1061-57090	METAL, 12X15		1		1				
8	1	1E1061-57110	LEVER, ACCELERATOR	1	1						
8-1	1	1E1061-57111	LEVER, ACCELERATOR	1	1	1	1				N
				(A=F100181) (B=F100251)							
9	1	1E1061-57130	COVER, ACCELERATOR	1	1	1	1				
10	1	1E1061-57141	SPRING, COIL 13	1	1	1	1				
11	1	1E1061-57150	WIRE, ACCELERATOR	1	1	1					
11-1	1	1E1061-57151	WIRE, ACCELERATOR	1	1	1	1				N
				(A=F100291) (B=F100968) (C=F100191)							
12	1	1E1060-57200	PLATE, LEVER		1						Z
				(B=F103784)							
13	1	1E1061-57300	COVER, LATCH	1	1	1	1				
14	1	1E1061-57501	LEVER, CLUTCH		1	1	1				
15	1	1E1061-57560	LEVER, CHANGE	1	1	1	1				
16	1	1E1061-57600	GRIP, LEVER	1	1	1	1				
17	1	1E1061-57640	WASHER, WAVE 10	1	1	1	1				
18	1	1E1061-57650	WIRE, TRAVEL CLUTCH	1	1	1					
18-1	1	1E1061-57651	WIRE, TRAVEL CLUTCH	1	1	1	1				N
				(A=F100291) (B=F100968) (C=F100191)							
19	1	1E1061-57700	WIRE, CHANGE	1	1	1					
19-1	1	1E1061-57701	WIRE, SHIFT	1	1	1	1				N
				(A=F100291) (B=F100968) (C=F100191)							
20	1	1E1061-57730	SPRING, TENSION 112	1	1	1	1				
21	1	1E1061-57740	SPRING, TENSION 66	1	1	1	1				
22	1	1E1061-57750	METAL, LEVER		1	1	1				
23	1	1E1061-57850	COVER, HANDLE		1		1				
24	1	1E1061-57921	LEVER, CLUTCH	1							
25	1	1G0010-82850	SCREW, TAPPING M4X12		1						Z
				(B=F103784)							
26	1	1E6102-84970	BAND 140, WIRE LOCK	2	2	3	2				
27	1	1E6790-95471	SCREW, TAPPING M6X16	2	2	2	2				
28	1	1E4320-99120	BOLT, M6X16 CRH		2		2				
29	1	22137-060000	WASHER, 6		1						
29-1	1	1E4030-99230	WASHER 6X16X1		1		1				N
				(B=F102942)							
30	1	22137-100000	WASHER, 10	1	1	1	1				
31	1	22217-080000	WASHER, SPRING 8		1		1				



Fig.9. CASING & COVER

(A)=YL630T  
(B)=YL630TS  
(C)=YL630T-R

(D)=YL630TSC  
(E)=  
(F)=



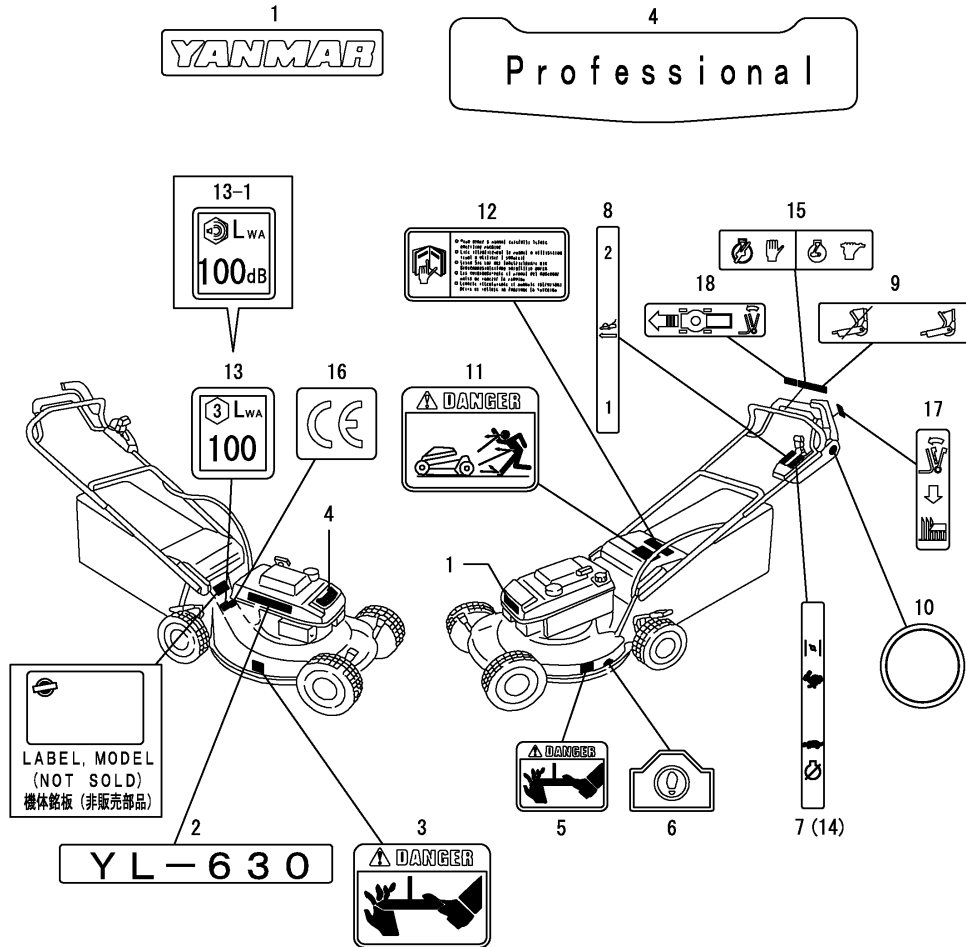
No.	Lev.	Parts No.	Description	Qty						I	R
				(A)	(B)	(C)	(D)	(E)	(F)		
1	1	1E1071-61010	CASING 53, BLADE	1	1	1					
1-1	1	1E1071-61011	CASE, BLADE 53	1	1	1	1				R
		(A=FXXXXXX) (B=F104222) (C=F102957)									
2	1	1E1071-61050	COVER, CATCHER 53	1	1	1	1				
3	1	1E1061-61070	SEAT, COVER	1	1	1	1				
4	1	1E1061-61110	SPRING, A	1	1	1	1				
5	1	1E1061-61120	SPRING, B	1	1	1	1				
6	1	1E1061-61130	PIN, 8X310	1	1	1	1				
7	1	1E1061-61201	STAY, L	1	1	1					Z
		(A=F100291) (B=F100968) (C=F100191)									
8	1	1E1061-61251	STAY, R	1	1	1					Z
		(A=F100291) (B=F100968) (C=F100191)									
9	1	1E1061-61300	RUBBER, ABSORBER A	2	2	2					Z
		(A=F100291) (B=F100968) (C=F100191)									
10	1	1E1071-61310	RUBBER, PROTECT 530	1	1	1					Z
		(A=F100291) (B=F100968) (C=F100191)									
11	1	1E1061-61320	WASHER, RETAINER	1	1	1					Z
		(A=F100291) (B=F100968) (C=F100191)									
12	1	26367-060002	NUT, M6	6	6	6					Z
		(A=F100291) (B=F100968) (C=F100191)									
13	1	26476-080162	SCREW, TAPPING M8X16	2	2	2	2				



Fig.11. LABELS

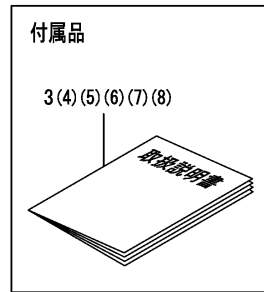
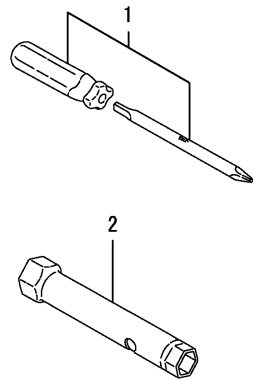
(A)=YL630T  
(B)=YL630TS  
(C)=YL630T-R

(D)=YL630TSC  
(E)=  
(F)=



No.	Lev.	Parts No.	Description	Q'ty						I	R
				(A)	(B)	(C)	(D)	(E)	(F)		
1	1	1E1071-86010	LABEL, FRONT MARK PR	1	1	1	1				
2	1	1E1071-86070	MARK "630",MODEL	1	1	1	1				
3	1	1E1061-86100	LABEL, HOUSING A	1	1	1	1				
4	1	1E1071-86100	MARK "PRO"	1	1	1	1				
5	1	1E1061-86110	LABEL, HOUSING B	1	1	1	1				
6	1	1E1061-86121	LABEL, STEP	1	1	1					Z
(B=F103784) (C=F102957)											
7	1	1E1061-86150	LABEL, CONTROL	1	1		1				
8	1	1E1061-86160	PLATE, CHANGE	1	1	1	1				
9	1	1E1061-86171	LABEL, BLADE LEVER			1			1		
10	1	1E1061-86180	LABEL, SIDE COVER			1			1		
11	1	1E1061-86200	LABEL, CATCHER COVER	1	1	1	1				
12	1	1E1061-86220	LABEL, CAUTION	1	1	1	1				
13	1	1E1070-86910	LABEL, EC PASSING	1	1	1					
13-1	1	1E1071-86280	LABEL, SOUND LEVEL			1	1	1			S
(B=F103784) (C=F102957)											
14	1	1E1061-86190	LABEL, CONTROL					1			
15	1	1E1061-86600	LABEL, ENGINE STOP					1			
16	1	1E1061-86610	MARK "CE"			1	1	1			W
(B=F100251)											
17	1	1E1061-86230	LABEL, BLADE LEVER			1			1		W
(B=F103784)											
18	1	1E1061-86240	LABEL, TRAVEL LEVER			1	1	1			W
(B=F103784) (C=F102957)											

# Fig.12. TOOLS



(A)=YL630T  
(B)=YL630TS  
(C)=YL630T-R

(D)=YL630TSC  
(E)=  
(F)=

No.	Lev.	Parts No.	Description	Q'ty						I	R
				(A)	(B)	(C)	(D)	(E)	(F)		
1	1	1C6052-88060	SCREWDRIVER,COMBINAT	1	1	1	1				
2	1	1E4150-99260	WRENCH, SOCKET 13X21	1	1	1	1				
3	1	1E1071-88051	MANUAL,LWN.MOWER OP.	1	1	1					
3-1	1	1E1071-88052 (A=F100291) (B=F100968) (C=F100191)	MANUAL, LWN.MOWER OP	1	1	1					S
3-2	1	1E1071-88053 (A=FXXXXXXX) (B=F103784) (C=F102957)	MANUAL, INSTRUCTION	1	1	1					S
3-3	1	1E1071-88053 (A=FXXXXXXX) (B=F103784) (C=F102957)	MANUAL, INSTRUCTION	1	1	1					Z
4	1	1E1061-88350 (A=FXXXXXXX) (B=F103784) (C=F102957)	MANUAL, INSTRUCTION	1	1	1					W
4-1	1	1E1071-88350 (A=FXXXXXXX) (B=F105756) (C=FXXXXXXX)	MANUAL, INSTRUCTION	1	1	1	1				S
5	1	1E1061-88360 (A=FXXXXXXX) (B=F103784) (C=F102957)	MANUAL, INSTRUCTION	1	1	1					W
5-1	1	1E1061-88360 (A=FXXXXXXX) (B=F103784) (C=F102957)	MANUAL, INSTRUCTION	1	1	1					Z
6	1	1E1061-88370 (A=FXXXXXXX) (B=F103784) (C=F102957)	MANUAL, INSTRUCTION	1	1	1					W
6-1	1	1E1061-88370 (A=FXXXXXXX) (B=F103784) (C=F102957)	MANUAL, INSTRUCTION	1	1	1					Z
7	1	1E1061-88380 (A=FXXXXXXX) (B=F103784) (C=F102957)	MANUAL, INSTRUCTION	1	1	1					W
7-1	1	1E1061-88380 (A=FXXXXXXX) (B=F103784) (C=F102957)	MANUAL, INSTRUCTION	1	1	1					Z
8	1	1E1061-88390 (A=FXXXXXXX) (B=F103784) (C=F102957)	MANUAL, INSTRUCTION	1	1	1					W
8-1	1	1E1061-88390 (A=FXXXXXXX) (B=F103784) (C=F102957)	MANUAL, INSTRUCTION	1	1	1					Z



## Parts No. Index

Parts No.	Fig. No.	Ref. No.
1A1040-46460	1	19
1C6052-88060	12	1
1C6281-52310	8	41
1E1060-12011	1	5
1E1060-12100	1	6
1E1060-12340	1	14
1E1060-12350	8	1
1E1060-12970	1	17
1E1060-12990	1	18
1E1060-25140	3	6
1E1060-25420	4	2
1E1060-31100	4	3
1E1060-31450	4	4
1E1060-41120	6	2
1E1060-42050	6	4
1E1060-57200	8	12
1E1061-11100	1	1
1E1061-12150	1	7
1E1061-12170	1	8
1E1061-12220	1	9
1E1061-12251	1	10
1E1061-12310	1	12
1E1061-12360	1	15
1E1061-12650	1	16
1E1061-21010	2	1
1E1061-21030	2	2
1E1061-25011	3	1
1E1061-25012	3	1 -1
1E1061-25050	3	2
1E1061-25051	3	2 -1
1E1061-25060	3	3
1E1061-25070	3	4
1E1061-25110	3	5
1E1061-25111	3	5 -1
1E1061-25140	3	7
1E1061-25141	3	7 -1
1E1061-25142	3	7 -2
1E1061-25150	3	8
1E1061-25151	3	8 -1
1E1061-25160	3	9
1E1061-25170	3	10
1E1061-25171	3	10 -1
1E1061-25180	3	11
		11 -1
1E1061-25210	3	13
1E1061-25211	3	13 -1
1E1061-25212	3	13 -2
1E1061-25250	3	14
1E1061-25270	3	15
1E1061-25271	3	15 -1

Parts No.	Fig. No.	Ref. No.
1E1061-25300	3	16
1E1061-25330	3	17
1E1061-25370	3	18
1E1061-25410	3	19
1E1061-25430	3	20
1E1061-25431	3	20 -1
1E1061-25481	3	40
1E1061-25490	3	30 -1
1E1061-25491	3	30 -2
1E1061-25500	3	21
1E1061-25501	3	21 -1
1E1061-25502	3	21 -2
1E1061-25610	3	7 -3
1E1061-25620	3	8 -2
1E1061-25630	3	13 -3
1E1061-31500	4	20
1E1061-31530	4	7
1E1061-31550	4	8
		21
1E1061-31650	4	9
1E1061-31660	4	17
1E1061-31661	4	17 -1
1E1061-31671	4	10
1E1061-31681	4	11
1E1061-31690	4	12
1E1061-31750	4	13
1E1061-35010	5	1
1E1061-35050	5	2
1E1061-35200	5	3
1E1061-35210	5	4
1E1061-35250	5	5
1E1061-35350	5	6
1E1061-35510	5	7
1E1061-35550	5	8
1E1061-41130	6	3 -1
1E1061-43200	6	8
1E1061-51011	7	5
1E1061-51012	7	5 -1
1E1061-51110	7	6
1E1061-51700	7	7
1E1061-51710	7	15
1E1061-51711	7	15 -1
1E1061-56010	7	10
1E1061-56020	7	10 -1
1E1061-56050	7	11
1E1061-56051	7	11 -2
1E1061-56060	7	11 -1
1E1061-57011	8	2
1E1061-57012	8	2 -1
1E1061-57040	8	3

Parts No.	Fig. No.	Ref. No.
1E1061-57050	8	4
1E1061-57051	8	4 -1
1E1061-57061	8	5
1E1061-57062	8	5 -1
1E1061-57080	8	6
1E1061-57090	8	7
1E1061-57110	8	8
1E1061-57111	8	8 -1
1E1061-57130	8	9
1E1061-57141	8	10
1E1061-57150	8	11
1E1061-57151	8	11 -1
1E1061-57200	8	36
1E1061-57280	8	39
1E1061-57300	8	13
1E1061-57350	8	42
1E1061-57360	8	43
1E1061-57370	8	44
1E1061-57380	8	45
1E1061-57390	8	46
1E1061-57501	8	14
1E1061-57560	8	15
1E1061-57600	8	16
1E1061-57640	8	17
		47
1E1061-57650	8	18
1E1061-57651	8	18 -1
1E1061-57700	8	19
1E1061-57701	8	19 -1
1E1061-57730	8	20
1E1061-57740	8	21
1E1061-57750	8	22
1E1061-57850	8	23
1E1061-57921	8	24
1E1061-61070	9	3
1E1061-61110	9	4
1E1061-61120	9	5
1E1061-61130	9	6
1E1061-61201	9	7
1E1061-61251	9	8
1E1061-61300	9	9
1E1061-61320	9	11
1E1061-63130	10	5
1E1061-63140	10	6
1E1061-86100	11	3
1E1061-86110	11	5
1E1061-86121	11	6
1E1061-86150	11	7
1E1061-86160	11	8
1E1061-86171	11	9

Parts No.	Fig. No.	Ref. No.
1E1061-86180	11	10
1E1061-86190	11	14
1E1061-86200	11	11
1E1061-86220	11	12
1E1061-86230	11	17
1E1061-86240	11	18
1E1061-86600	11	15
1E1061-86610	11	16
1E1061-88350	12	4
1E1061-88360	12	5
		5 -1
1E1061-88370	12	6
		6 -1
1E1061-88380	12	7
		7 -1
1E1061-88390	12	8
		8 -1
1E1070-86910	11	13
1E1071-12300	1	11
1E1071-12320	1	13
1E1071-12321	1	13 -1
1E1071-12750	1	3
1E1071-21100	2	4
1E1071-21120	2	5
1E1071-21250	2	6
1E1071-25200	3	12
1E1071-31500	4	5
1E1071-31510	4	6
1E1071-31570	4	5 -1
1E1071-31580	4	6 -1
1E1071-31580-1	4	22
1E1071-31600	4	8 -1
1E1071-31700	4	18
1E1071-41100	6	1
1E1071-43011	6	6
1E1071-43100	6	7
1E1071-50010	7	1
1E1071-50011	7	1 -1
1E1071-56200	7	12
1E1071-57270	8	38
1E1071-57271	8	38 -1
1E1071-61010	9	1
1E1071-61011	9	1 -1
1E1071-61050	9	2
1E1071-61310	9	10
1E1071-63010	10	1
1E1071-63051	10	2
1E1071-63051-1	10	12
1E1071-63060	10	3
1E1071-63060-1	10	13

## Parts No. Index

Parts No.	Fig. No.	Ref. No.
1E1071-63100	10	4
1E1071-65090	10	7
1E1071-86010	11	1
1E1071-86070	11	2
1E1071-86100	11	4
1E1071-86280	11	13 -1
1E1071-88051	12	3
1E1071-88052	12	3 -1
1E1071-88053	12	3 -2
		3 -3
1E1071-88350	12	4 -1
1E4030-99230	1	21 -1
	8	29 -1
1E4110-24010	4	1
1E4150-99260	12	2
1E4320-99120	8	28
1E4480-99150	1	20
1E6102-84970	8	26
1E6790-95471	8	27
1E6910-39640	3	22
1G0010-82850	8	25
1S6530-61730	8	6 -1
22137-060000	1	21
	3	23
	8	29
		48
22137-080000	5	9
	8	40
22137-100000	8	30
22157-080000	4	14
22190-080000	3	24
22217-050000	8	49
22217-060000	8	50
22217-080000	7	2
		8
	8	31
22242-000200	2	3
22252-000220	3	41
22312-040080	3	25
22312-040140	3	26
22351-035025	3	27
22351-050025	8	32
22351-060025	3	28
22417-200120	1	22
	8	33
22451-100160	3	29
22487-060160	8	32 -1
22522-040160	1	23
22551-050250	3	30
24101-060034	3	42

Parts No.	Fig. No.	Ref. No.
24101-063014	3	43
24104-060024	4	19
24104-062044	1	24
24311-000070	3	31
24321-001100	3	32
24550-010200	8	37
26013-060122	6	5 -1
	8	34 -1
	10	8 -1
26014-080162	1	4 -1
	4	15 -1
26016-060122	6	5
26016-060124	8	34
	10	8
26018-080164	1	4
	4	15
26106-080162	4	16 -2
26106-080302	7	3 -1
26106-100352	1	2 -1
26107-080122	4	16
26107-080162	4	16 -1
26107-080302	7	3
26107-100352	1	2
26116-060202	3	33 -1
26116-080122	3	34 -1
26117-060202	3	33
26117-080122	3	34
26138-100202	6	3
26347-060002	3	35
26367-060002	9	12
26367-080002	5	10
	7	13
26476-060202	3	36
26476-060302	3	37
26476-080162	1	25
	2	7
	3	38
	7	14
	9	13
	10	9
		10
		11
26587-050122	8	51
26658-060002	8	52
26658-080002	8	35
26668-080002	7	4
		9
26717-050002	8	53
26717-060002	3	39
26717-080002	5	11

Parts No.	Fig. No.	Ref. No.
-----------	----------	----------

Parts No.	Fig. No.	Ref. No.
-----------	----------	----------